

# Minimum Documentation Fiche

## 01. Picture of building



Depicted item: Borgo Segezia, the Church and bell tower  
source: <http://www.artefascista.it/>  
date:

### 1. Identity of building

1.1 current name of building	Borgo Segezia
1.2 variant or former name	
1.3 number & name of street	
1.4 town	Segezia
1.5 province/state	Foggia/Puglia
1.6 zip code	71122
1.7 country	Italy
1.8 national grid reference	41°23'08 N 15°29'40 E
1.9 classification/typology	Urban centre
1.10 protection status & date	None

### 2 History of building

2.1 original brief/purpose	Urban centre
2.2 dates: commission/completion	1936/1942
2.3 architectural and other designers	Concezio Petrucci
2.4 others associated with building	
2.5 significant alterations with dates	
2.6 current use	Urban centre

2.7 current condition

Medium

### **3. Description**

#### *3.1 General description*

The center was established as part of a strategy of new production structure and the urban area around Foggia developed by Concezio Petrucci, which draws up the General Urban Plan of the Tavoliere of Foggia and who has a clear sense of the intervention and the character that the "new city" must assume.

#### *3.2 Construction*

The general layout of the new municipal center, compared with other projects from the same Petrucci, is rational and geometric, and expands freely on a flat site, sloping slightly to the east. The center of the urban settlement is the square in which the east-west axis road joins "a baionetta", taking as a backdrop the town hall from the west, the Church and its bell tower from the east. The House of Fascism, without the Fascist tower, is closed off in a not significant corner of the square, related to the post office, and it overlooks on a small square angular, restricted by the presence of a fountain. The square is dominated by the bell tower, which stands out against over the entire urban composition and is the essential feature of the intervention. From the square and from public buildings, are developed residential houses and townhouses.

Petrucci designs a city "without walls", potentially expandable in the countryside, it is not a rigid structure but a housing unit open outward.

The center Segezia is not been fully realized, in fact it is devoid of the residential fabric of the project.

#### *3.3 Context*

Borgo Segezia is a fraction of Foggia from which is about 10 km and is about 130 km from Bari.

### **4. Evaluation**

#### *4.1 Technical*

High value.

#### *4.2 Social*

High value.

#### *4.3 Cultural & aesthetic*

During the drafting of the project Petrucci seems interested in investigating the way in which orthogonal and rational patterns of "modern standard" can interact with an architecture built with local materials and logical, searching a significance and a consistency that gives visibility to the "rural area" starting from a careful study of the old urban centers of the specific local context.

#### *4.4 Historical*

The Borgo Segezia was thought, unlike other cities built during the fascist period, as an ideal place for the settlement of local settlers. It was a community of the "infrastructure network in the territory", the ones that were supposed to supplement the existing road system with more ring roads.

#### *4.5 General assessment*

Although Segezia remained an interrupted architecture, this is still one of the most beautiful examples of the early twentieth century. In Segezia a different number of architectural languages, of continuous and discontinuous systems are combined to form what has been called "formal eclecticism".

## 5. Documentation

### 5.1 *Principal references*

ARMILLOTTA, Fabio, Aspetti interpretativi e problemi di conservazione a Capitanata e Segezia, in *Curare il Moderno. I modi della tecnologia*, a cura di Pier Giovanni Bardelli, Elena Filippi, Emilia Garda, Marsilio, Venezia 2002, pp. 141-148

CUCCIOLLA, Arturo, *Vecchie città/Città nuove. Concezio Petrucci 1926-1946*, Edizioni Dedalo, Bari 2006, pp. 264-288

### 5.2 *visual material attached*

Fig.01 – Borgo Segezia: the project

Fig. 02 – The Church façade

Fig.03 – The bell tower

Fig.04 – General view

Fig.05 – General view

Fig.06 – House of Fascism: details

photos by <http://www.artefascista.it>

### 5.3 *rapporteur/date*

Massimiliano Savorra, March 2015

Adriana Marra, March 2015

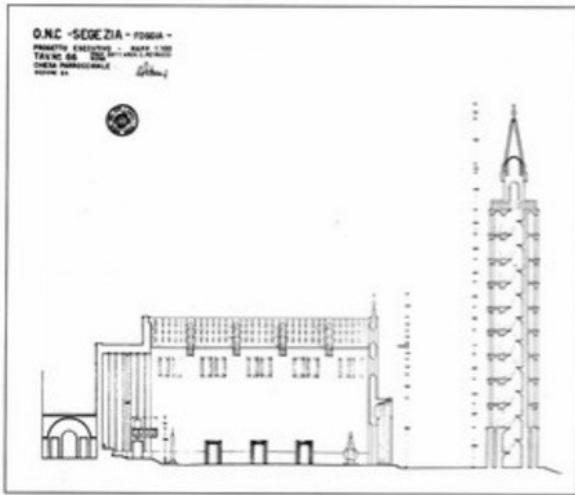
## 6. Fiche report examination by ISC/R

name of examining ISC member: date of examination:

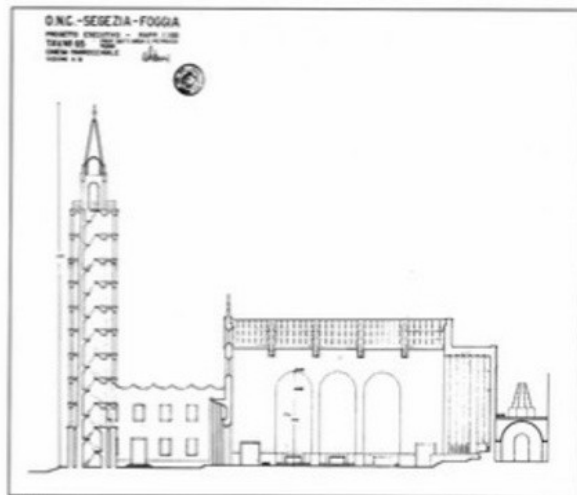
approval:

working party/ref. n°: NAI ref. n°:

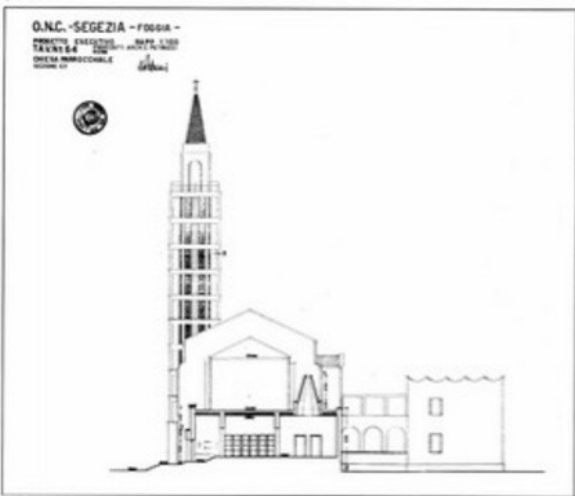
comments:



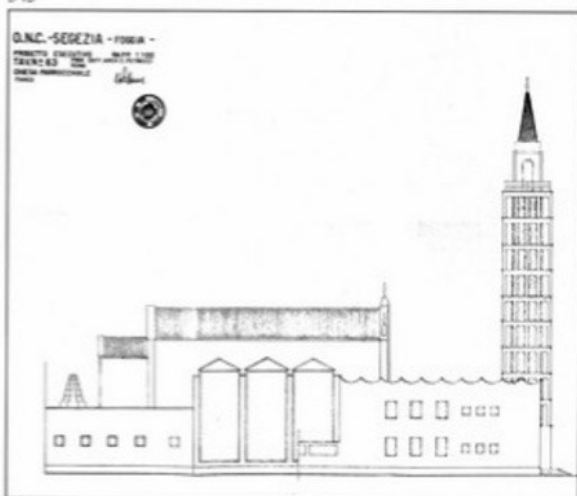
344



345



346



347

344-347. C. Petrucci, *Centro comunale di Segezia. Disegni esecutivi della Chiesa e del Campanile*, 1940. ACS, Fondo O.N.C. progetti, B.459.

Fig.01 – Borgo Segezia: the project



Fig. 02 – The Church façade



Fig.03 – The bell tower



Fig.04 – General view



Fig.05 – General view



Fig.06 – House of Fascism: details